



SPIRA
F L E X

one fits all

The first universal sound tube system.

bernafon[®]
Innovative Hearing Solutions



The universal thin sound tube system

Have you ever wondered about how successful your business could be, if nearly all your fittings were with a thin tube system?

Now you can find out: Bernafon brings the application of thin sound tubes in modern fittings to a new level with a pioneering innovative system called SPIRA^{flex}. It fits nearly all clients and does away with the hassle of finding the right tube and dome. SPIRA^{flex} is a powerful accessory to increase your sales and fit significantly more clients.

The SPIRA^{flex} system fits all of today's needs for an aesthetic and comfortable hearing solution. With its unique choice of sound tube options, standard or customized ear pieces, and the smart software implementation of acoustic options, SPIRA^{flex} is the first modular solution for open fittings. It works with all Bernafon hearing solutions.

SPIRA^{flex} is the first modular thin sound tube concept. Make your fittings easy and successful.

3 Easy Pieces:

1 SPIRA^{flex} Adapter

The adapter is the cornerstone of the SPIRA^{flex} concept. It links all Bernafon BTE hearing instruments with the SPIRA^{flex} sound tubes. This innovative adapter system makes SPIRA^{flex} unique and convenient.

2 SPIRA^{flex} Sound Tube

The pre-bent SPIRA^{flex} sound tubes click onto the SPIRA^{flex} adapter and are available as standard thin tube (inner diameter of 0.9 mm) or as power tube (1.3 mm) for optimized fitting flexibility.

3 Ear pieces

To ensure maximum acoustic performance and wearing comfort, Bernafon offers a multitude of earpieces, which can be selected in the OASIS plus fitting software. You can choose between open domes, a tulip dome, or various custom solutions.





SPIRA
F L E X

One Kit fits all

Since the introduction of thin sound tubes, nearly every hearing system supplier has launched one or more kits for thin tube fittings. Today, basically every new BTE shape requires a new tubing system and therefore a new fitting kit. This situation leads to a unmanageable stock of different fitting kits and tools for the hearing care professional.

With the new SPIRA^{flex} fitting kit, Bernafon provides the first solution covering all fittings in one box. The smart adapter system offers the possibility to fit every Bernafon hearing system with one fitting kit and dramatically reduces your pile of fitting boxes.

The unique modular system makes SPIRA^{flex} the best choice for easy and successful thin tubes fittings. In addition, the upgrade possibilities in SPIRA^{flex} ensure your client's satisfaction in the future.





One thin sound tube system for all fittings

Today there is a significant trend towards aesthetic and comfortable solutions for every type of hearing loss, from mild to severe. SPIRA^{flex} is designed to fulfill your client's wishes for an invisible and fully customized hearing solution.

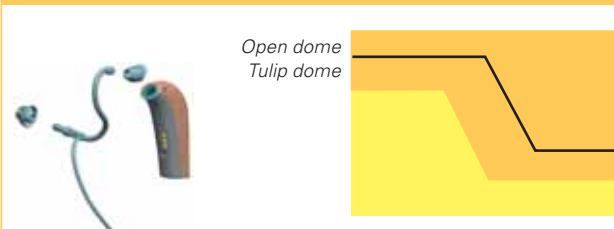
Best suited for the first-time user with a mild to moderate ski-slope hearing loss, the SPIRA^{flex} tube 0.9 meets today's standard in the thin tube category and the best in real open fitting comfort.

With additional insertion gain of 5–10 dB, the SPIRA^{flex} power tube 1.3 allows you to fit or upgrade a large number of your clients with a better looking and more comfortable solution.

For moderate to severe broadband hearing losses, the upgrade to a standard ear hook completes the acoustic options for all hearing solutions from Bernafon.

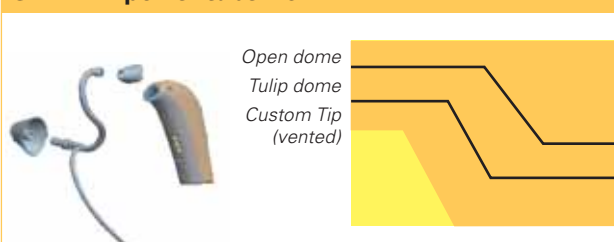
With the new SPIRA^{flex} adapter system, Bernafon introduces two thin tubes with different inner diameters. The unparalleled flexibility of SPIRA^{flex} gives you the possibility to cover 3 fitting ranges with one hearing system:

SPIRA^{flex} thin tube 0.9




The diagram shows two acoustic profiles: 'Open dome' (top) and 'Tulip dome' (bottom). The 'Open dome' profile has a wide, shallow curve, while the 'Tulip dome' profile has a steeper, more defined curve. The thin tube 0.9 is shown in a blue and white color scheme.

SPIRA^{flex} power tube 1.3



The diagram shows three acoustic profiles: 'Open dome' (top), 'Tulip dome' (middle), and 'Custom Tip (vented)' (bottom). The 'Open dome' profile is the widest and shallowest, the 'Tulip dome' is narrower and steeper, and the 'Custom Tip (vented)' is the narrowest and steepest. The power tube 1.3 is shown in a blue and white color scheme.

Standard Earhook



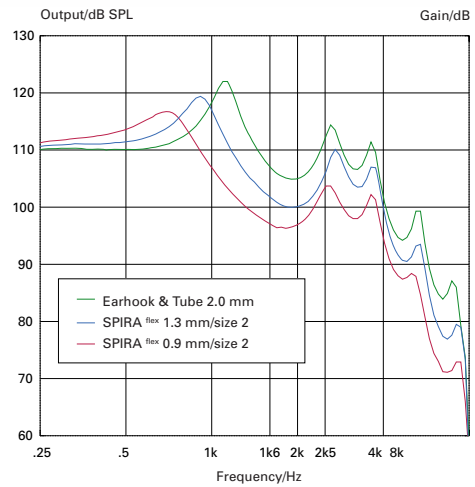
The illustration shows a standard earhook, which is a curved hook that fits over the ear. It is shown in a blue and white color scheme.



Smart and innovative

SPIRA flex tubes performance

The SPIRA flex tubes 0.9 and 1.3 are specially designed for open fittings up to a (moderately) severe hearing loss. The maximum gain is defined by the tube inner diameter. The graph shows the various max. gain performances of the SPIRA flex tubes 0.9/1.3 and the standard earhook performance of ICOS 105 BTE DM for example.



SPIRA flex Custom Tip ear piece

The Custom Tip is the perfect combination of comfort and customization. The very short vent length and the small contact area in the ear canal make the Custom Tip the best customized ear piece solution for open fittings. The venting options give you the opportunity to fit a large number of your customers with this innovative ear piece solution.



SPIRA flex adapter system

Just click and go!

The innovative SPIRA flex adapter system just snaps on, making the thin tube handling easy and intuitive. The easy click system makes regular tube exchange convenient and hassle-free (we recommend changing the tube every 3 months). The fast disconnection of the tube allows for easy cleaning.



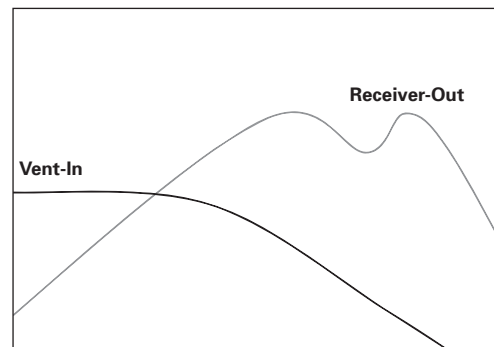
Unique OpenFit™ performance



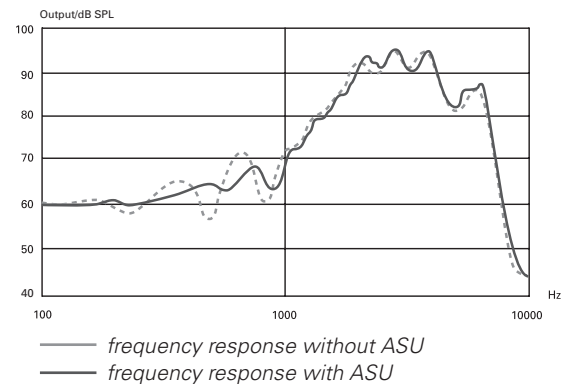
Bernafon's proprietary and proven OpenFit™ system is the backbone for successful fittings. OpenFit™ is the unique combination of innovative and powerful software features in OASIS plus:

Adaptive Signal Unification ASU™

Bernafon engineers searched for a way to control the dynamic interaction of the unamplified signal coming in through the vent with the amplified sound coming from the processor. The solution is a proprietary feature called Adaptive Signal Unification (ASU). Since the acoustic path of the sound coming in through the vent is fixed, it is possible to manage the interaction by controlling the amplified signal. ASU works continuously to control the electronic path of the amplified signal to minimize peaks and dips in the frequency response region where the vent and the amplified signal combine. By keeping the response smooth, consistent sound quality is maintained for all input levels.



The Vent-In and Receiver-Out Responses shown separately



Automatic low frequency compensation

As standard domes and vents become more open, more low frequency energy is lost. The OpenFit™ system automatically compensates for this loss of low frequency energy so that clients still receive the amplification they need.

Fast adaptive feedback cancellation (AFC)

Bernafon's advanced Adaptive Feedback Canceller solves the main problem in open fittings. Working on-line, AFC detects the presence of feedback and subtracts it from the incoming signal. This allows for occlusion-free and feedback-free performance at the same time.

OASIS plus – the universal fitting software with all acoustic options

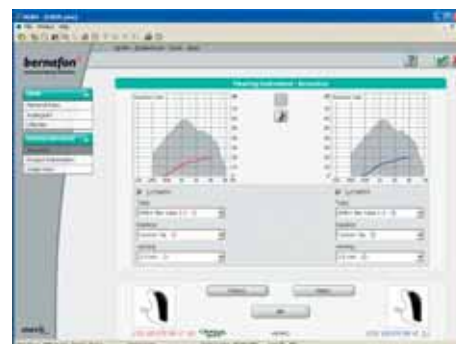
Besides the easy handling of the SPIRA flex hardware components, Bernafon's fitting software OASIS plus 7.0 offers a fully integrated system of all acoustic options in one optimized fitting flow. In easy steps, you determine the most accurate and aesthetic acoustic option that perfectly matches the hearing loss and the client needs.

In the SPIRA flex fitting process, you can choose from two different types of pre-bent sound tubes (SPIRA flex 0.9 and SPIRA flex 1.3) and two standard earpieces (open dome and tulip dome) or from two types of custom earpieces.

The new flow in OASIS plus 7.0 supports the fast, instant, and intuitive fitting process on-the-spot.

1. Choose the appropriate acoustic system following the hearing loss and the client's need. (OASIS plus will recommend the best solution based on the hearing loss and the client's preferences).
2. Select the appropriate hardware parts from the SPIRA flex Fitting Kit.
3. Snap the parts together following the instructions in OASIS plus 7.0.
4. Start fitting!

Acoustic options in OASIS plus	Open dome	Tulip dome	Custom tip
SPIRA flex tube 0.9	✓	✓	✓
SPIRA flex tube 1.3	✓	✓	✓





SPIRA
F L E X

The universal thin tube system for all Bernafon hearing systems

Bernafon provides a wide range of digital hearing systems that cover all of your client's needs. All hearing instruments are fit with OASIS plus – the single, intelligent fitting software for all Bernafon instruments.

icos

sybio^{XT}

prio

SWISS⁺EAR²

neo

Bernafon AG
Morgenstrasse 131
3018 Bern
Switzerland
Phone 031 998 15 15
Fax 031 998 15 90
www.bernafon.com

Bernafon Australia Pty. Ltd.
512 Wickham Street
Fortitude Valley QLD. 4006
Australia
Phone (07) 3250 0300
Fax (07) 3252 2048
Toll free 1800 809 111
www.bernafon.com.au

Bernafon New Zealand Ltd.
19 Tardale Grove, Albany
P.O. Box 302 149
North Harbour, Auckland 1330
New Zealand
Phone 9 920 42 40
Fax 9 920 42 43
Toll free 0 800 442 257
www.bernafon.co.nz

Bernafon UK
Cadzow Industrial Estate
Low Waters Road, Hamilton
ML3 7QE Scotland
United Kingdom
Phone 01 698 28 59 68
Fax 01 698 42 14 56
www.bernafon.co.uk



SWISS⁺
Engineering

www.bernafon.com

bernafon[®]
Innovative Hearing Solutions

Bern - Amsterdam - Auckland - Berlin - Brisbane - Copenhagen - Gdańsk - Glasgow - New Jersey - Paris - Rome - Stockholm - Tokyo - Toronto